



AG SPRAY EQUIPMENT, INC.

OWNERS MANUAL



AG 15, 25 & 55 LAWN & GARDEN

SHURflo 1.8gpm 12V PUMP

**2 & 5 NOZZLE BOOM &
KLC BOOMLESS TIP**

AG SPRAY EQUIPMENT

OWNER'S MANUAL

Congratulations on purchasing your new lawn sprayer. This manual is designed to aid you in operating your new sprayer. Also enclosed is a parts breakdown on your electric pump, strainer assembly, 43LA spray gun, Valley Gun, the 50800 spray gun and calibration on the 2 & 5 nozzle booms.

WARRANTY

All Field Sprayers are under warranty by **Ag Spray Equipment, Inc.** for a one year period from the date of purchase. This warranty only applies to defects in workmanship or manufactures defects in their components. This warranty does not cover any misuse, abuse, or parts that may freeze & break. Owners are responsible for these issues. Parts proven defective before the one year period will be replaced at no charge.

Ag Spray Equipment, Inc. must be notified immediately of any defects or parts broken due to shipping on the sprayer before the one year period occurs. Waiting until after the one year period whether the sprayer has been ran once, twice, or none at all; warranty is void. No product will be accepted for return without authorization. All returned goods must be packaged securely and shipped with transportation charges prepaid.

***NOTE:** Diesel fuel & bleach will void warranty on these pumps.

For further information regarding parts or warranty, contact:

Ag Spray Equipment, Inc.
1100 New Industry Lane
Hopkinsville, KY 42240
Phone: 1-800-637-7172

ASSEMBLY INSTRUCTIONS

Take sprayer parts out of the box & lay them on the floor. First, take axle out & put on one side the spacer, tire, washer, & then the cotter pin in this order. Slide axle through the axle holder & put the spacer, tire, washer, & cotter pin on the other side. Next, take the tongue & slide it into the hole in front of sprayer. Line the pin hole on sprayer & the pin hole on the tongue & put the clip pin threw them hooking clip back onto pin. Take the boom & loosen the bolt that is going threw the welded nut & slide onto the square peg on the back of sprayer. After adjusting boom to desired height & tighten bolt back down. Then, connect boom hose to tee that is on the boom & tighten hose clamp.

***NOTE:** Some parts may be in a bag in the tank.

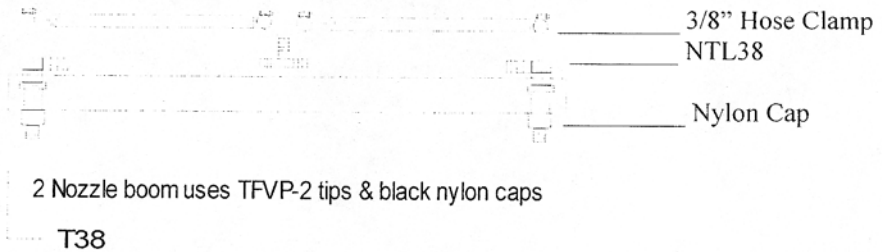
Operation & Instructions of New Sprayer

First, back your lawn tractor or 4-wheeler to the sprayer & connect them w/ a small hitch pin or bolt & nut. Secondly, connect the wire harness to the lawn tractor or 4 wheeler w/ the red (pos.) & black (neg.) brass clips to the battery on your equipment. + positive (red clip), - negative (black clip). After connecting the battery clips make sure the clips are not touching any metal for this will cause the motor & cables to burn up.

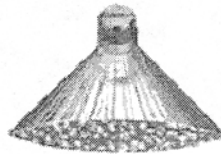
Next, fill the tank at least $\frac{1}{4}$ to $\frac{1}{2}$ full of plain water with no chemicals. Make sure agitation valve (return valve) is off, turned crossways. Turn toggle switch to the on position while opening the boom valve until air gets out of the system. Adjust pressure according to the speed & gallons per acre (GPA) that you need to spray. If sprayer has the **optional** handgun; depress the trigger & adjust nozzle spray pattern by turning the orange tip on the end of the handgun.

2 NOZZLE BOOM

The 2 nozzle boom on the 15, 25 & 55 lawn sprayer is equipped w/ TFVP-2 tips. The tips are on 40" spacing & the chart below will show the application rate in GPA. The first row [RED – TF-VS2] will be the chart to use for GPA needed.



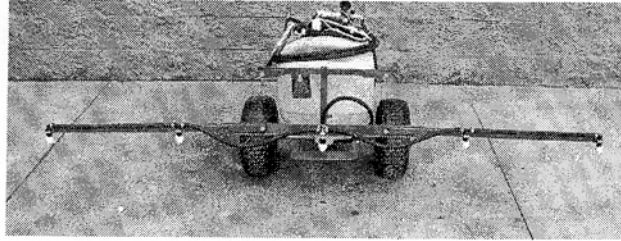
Turbo FloodJet Wide Angle Flat Spray Tip




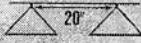


TIP COLOR VisiFlo®	TIP No. (STRAINER MESH SIZE)	LIQUID PRESSURE IN PSI	CAPACITY 1 NOZZLE IN GPM	CAPACITY 1 NOZZLE IN oz./min.	GALLONS PER ACRE 30" SPACING				GALLONS PER ACRE 40" SPACING			
					5 MPH	6 MPH	7 MPH	8 MPH	5 MPH	6 MPH	7 MPH	8 MPH
RED	TF-VS2 (50 MESH)	10	.20	26	7.9	6.7	5.6	4.9	5.9	5.0	4.2	3.7
		20	.28	36	11.2	9.3	8.0	7.1	8.4	7.0	6.0	5.3
		30	.35	45	13.7	11.4	9.7	8.5	10.3	8.6	7.3	6.4
BROWN	TF-VS2.5 (50 MESH)	10	.25	32	9.9	8.3	7.1	5.7	7.4	6.2	5.3	4.6
		20	.35	45	14.0	11.7	10.0	8.8	10.5	8.8	7.5	6.6
		30	.43	55	17.2	14.3	12.3	10.7	12.9	10.7	9.2	8.0
GRAY	TF-VS3 (50 MESH)	10	.30	38	11.9	9.9	8.5	7.4	8.9	7.4	6.4	5.6
		20	.42	54	16.8	14.0	12.0	10.5	12.8	10.5	9.0	7.9
		30	.52	67	21	17.2	14.7	12.9	15.4	12.9	11.0	9.7
WHITE	TF-VS4	10	.40	51	15.9	13.2	11.3	9.9	11.9	9.9	8.5	7.4
		20	.57	73	22	18.7	16.0	14.0	16.8	14.0	12.0	10.5
		30	.69	88	28	23	19.6	17.2	21	17.2	14.7	12.9
L. BLUE	TF-VS5	10	.50	64	19.9	16.5	14.1	12.4	14.9	12.4	10.6	9.3
		20	.71	91	28	23	20	17.5	21	17.5	15.0	13.1
		30	.87	111	35	28	25	22	26	21	18.4	16.1
L. GREEN	TF-VS7.5	10	.75	96	29	25	21	18.5	22	18.6	15.9	13.9
		20	1.1	141	43	35	31	26	32	26	23	19.7
		30	1.3	168	52	43	37	32	39	32	28	24
BLACK	TF-VS10	10	1.0	128	40	33	28	25	30	25	21	18.6
		20	1.4	179	56	47	40	35	42	35	30	26
		30	1.7	218	68	57	49	43	51	43	37	32

5 NOZZLE BOOM

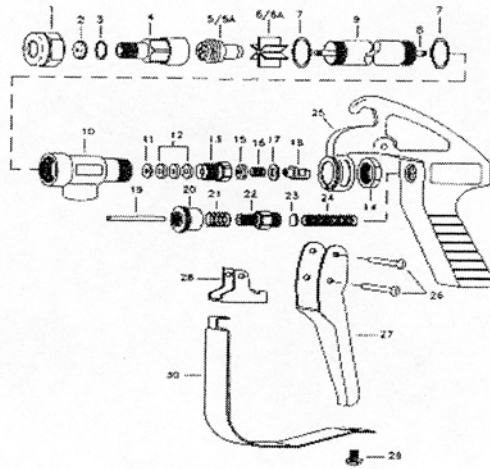
The 5 nozzle boom on the 15, 25 & 55 lawn sprayers are equipped with XR11002-VP tips. The tips are on 20" spacing & the chart below will show the application rate in GPA. The first row (YELLOW-8002/11002) will be the chart used to calculate GPA.



 	 PSI	GPM	GPA 											
			4 MPH	5 MPH	6 MPH	7 MPH	8 MPH	9 MPH	10 MPH	12 MPH	14 MPH	16 MPH	18 MPH	20 MPH
D25143-UB-8502 (DG, TJ60, TP, XR) 8002 (AI, DG, TJ60, TP, TT, XR) 11002 1/4TTJ02	15	0.12	8.9	7.1	5.9	5.1	4.5	4.0	3.6	3.0	2.5	2.2	2.0	1.8
	20	0.14	10.4	8.3	6.9	5.9	5.2	4.6	4.2	3.5	3.0	2.6	2.3	2.1
	30	0.17	12.6	10.1	8.4	7.2	6.3	5.6	5.0	4.2	3.6	3.2	2.8	2.5
	40	0.20	14.9	11.9	9.9	8.5	7.4	6.6	5.9	5.0	4.2	3.7	3.3	3.0
	50	0.22	16.3	13.1	10.9	9.3	8.2	7.3	6.5	5.4	4.7	4.1	3.6	3.3
	60	0.24	17.8	14.3	11.9	10.2	8.9	7.9	7.1	5.9	5.1	4.5	4.0	3.6
D25143-UB-8503 (DG, TJ60, TP, XR) 8003 (AI, DG, TJ60, TP, TT, XR) 11003 AIUB8503	15	0.18	13.4	10.7	8.9	7.6	6.7	5.9	5.3	4.5	3.8	3.3	3.0	2.7
	20	0.21	15.6	12.5	10.4	8.9	7.8	6.9	6.2	5.2	4.5	3.9	3.5	3.1
	30	0.26	19.3	15.4	12.9	11.0	9.7	8.6	7.7	6.4	5.5	4.8	4.3	3.9
	40	0.30	22	17.8	14.9	12.7	11.1	9.9	8.9	7.4	6.4	5.6	5.0	4.5
	50	0.34	25	20	16.8	14.4	12.6	11.2	10.1	8.4	7.2	6.3	5.6	5.0
	60	0.37	27	22	18.3	15.7	13.7	12.2	11.0	9.2	7.8	6.9	6.1	5.5
D25143-UB-8504 (DG, TJ60, TP, XR) 8004 (AI, DG, TJ60, TP, TT, XR) 11004 AIUB8504 1/4TTJ04	15	0.24	17.8	14.3	11.9	10.2	8.9	7.9	7.1	5.9	5.1	4.5	4.0	3.6
	20	0.28	21	16.6	13.9	11.9	10.4	9.2	8.3	6.9	5.9	5.2	4.6	4.2
	30	0.35	26	21	17.3	14.9	13.0	11.6	10.4	8.7	7.4	6.5	5.8	5.2
	40	0.40	30	24	19.8	17.0	14.9	13.2	11.9	9.9	8.5	7.4	6.6	5.9
	50	0.45	33	27	22	19.1	16.7	14.9	13.4	11.1	9.5	8.4	7.4	6.7
	60	0.49	36	29	24	21	18.2	16.2	14.6	12.1	10.4	9.1	8.1	7.3

SPRAYING SYSTEMS 43L-AL SPRAY GUN

PART #: AA43LA-AL6

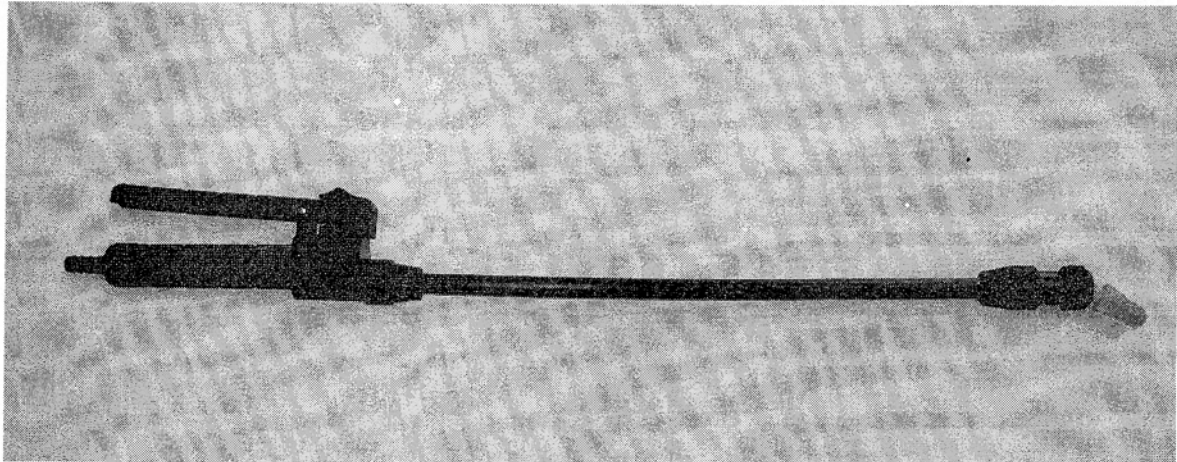


ITEM	PART #		DESCRIPTION
	BRASS	ALUMINUM	
1	CP1325	CP1325-AL	CAP, BRASS, or ALUMINUM
2	D-**	D-**	ORIFICE DISC, HARDENED STAINLESS STEEL
3	CP4743-NY	CP4743-NY	GASKET, NYLON
4	CP10566	CP10566-AL	NOZZLE HOUSING, BRASS or ALUMINUM
5A	10565	10565-AL	SEAT PLUG ASSEMBLY - BRASS or ALUMINUM
6	CP10571-2-NYB	CP10571-3-NYB	GUIDE VANE, NYLON
6A		CP10571-AL	GUIDE VANE, ALUMINUM
7	CP45195-NYB	CP45196-NYB	GASKET, NYLON (2 REQUIRED)
8	CP19238-416SS	CP19238-416SS	STEM, TYPE 416 STAINLESS STEEL
9	CP6604	CP6604-AL	TUBING, BRASS or ALUMINUM
10	CP6942	CP6942-AL	INLET BODY, BRASS or ALUMINUM
11	CP6601-302SS	CP6601-302SS	PACKING WASHER, TYPE 302 STAINLESS STEEL
12	CP6602-LEA	CP6602-LEA	PACKING LEATHER (3 REQUIRED)
	CP6602-TEF	CP6602-TEF	PACKING TEFLON (3 REQUIRED)
13	CP19237	CP19237-AL	PACKING SCREW, BRASS or ALUMINUM
14	CP6599	CP6599-IZP	LOCKNUT, BRASS, or STEEL ZINC PLATED
15	CP9641-INP	CP9641-INP	STEM NUT, STEEL NICKEL PLATED
16	CP6595-SS	CP6595-SS	TRIGGER STOP SPRING, SS
17	CP7991-SS	CP7991-SS	WASHER, SS
18	CP6597-INP	CP6597-INP	TRIGGER GUIDE, STEEL NICKEL PLATED
19	CP6591-SS	CP6591-SS	SPRING STUD, STAINLESS STEEL
20	CP6589-IZP	CP6589-IZP	STOP ADJUSTMENT NUT, STEEL ZINC PLATED
21	CP6594-SS	CP6594-SS	SPRING FOR STOP ADJUSTMENT NUT, SS
22	CP6588-IZP	CP6588-IZP	SPRING SCREW, STEEL ZINC PLATED
23	CP6592-302SS	CP6592-302SS	SPRING GUIDE WASHER, TYPE 302 SS
24	CP6593-1-SS	CP6593-1-SS	MAIN SPRING, SS for MODEL 43L
	CP6593-2-SS	CP6593-2-SS	MAIN SPRING, SS for MODEL 43H
25	CP14477-1-AL	CP14477-1-AL	HANDLE BODY, ALUMINUM
26	CP7623-IZP	CP7623-IZP	RIVET, STEEL NICKEL PLATED
27	CP6509-INP	CP6509-INP	TRIGGER, STEEL NICKEL PLATED
28	CP6510-INP	CP6510-INP	TRIGGER STOP, STEEL NICKEL PLATED
29	CP11757-SS	CP11757-SS	SCREW, STAINLESS STEEL
30	CP13798-INP	CP13798-INP	TRIGGER GUARD, STEEL NICKEL PLATED
			GUNJET No. AA43L - BRASS, FOR PRESSURE UP TO 200 psi
			GUNJET No. AA43L-AL - ALUMINUM, FOR PRESSURE UP TO 200 psi
			GUNJET No. AA43H - BRASS, FOR PRESSURES FROM 200 to 800psi
			GUNJET No. AA43H-AL - ALUMINUM FOR PRESSURES FROM 200 to 800psi
			PK-AB43-KIT SPARE PARTS KIT (includes all items marked)
			PK-AB43-AL-KIT SPARE PARTS KIT (includes all items marked)

OPTIONAL: VALLEY GUN
PART #: *VG8X18*

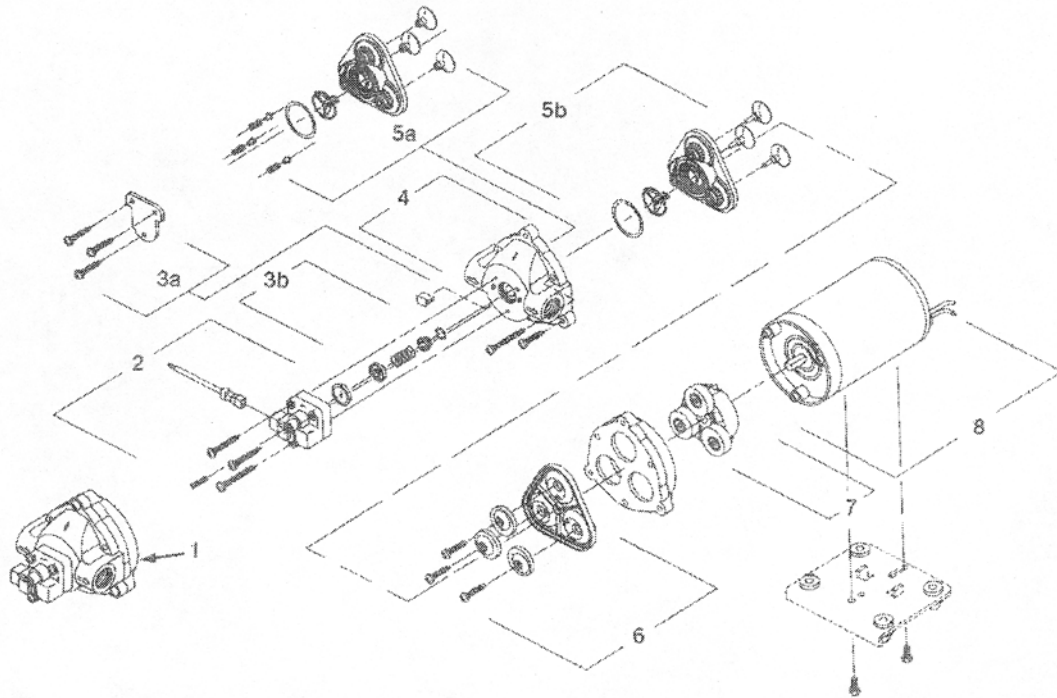


OPTIONAL: ECONOMY SPRAY GUN
PART #: *50800-15-PP-406*



***NOTE:** The tip is the only replacement part for this handgun. Part # is a 38720-PPB-X18.

SHURflo 8000-544-236 PARTS LIST



***NOTE:** When ordering parts, please give correct model number of the pump to insure the correct part is ordered.

8000 Series Pumps – 12V

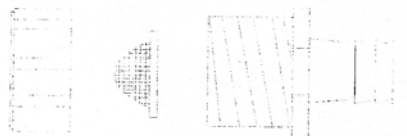
Parts List

Ref. #	Part #	Description
1	N/A	N/A
2	94-375-05	Pressure Switch
3a/3b	94-374-05	Check Valve Assembly
4	94-379-00	Upper Housing
5	94-390-05	Valve Assembly
6	94-395-06	Diaphragm Assembly
7	94-385-03	Drive/Impeller Assembly
8	N/A	N/A

STRAINER ASSEMBLY

STRAINER ASSEMBLY
IS INSIDE THE TANK

B34 W160M D3438





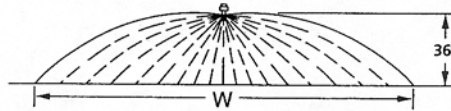
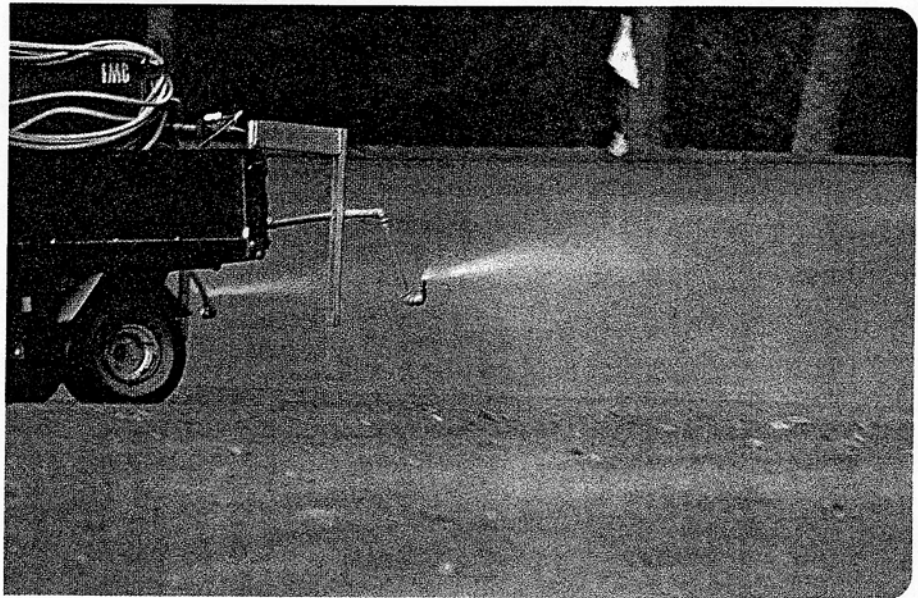
FieldJet® Boomless Nozzles with Extra Wide Flat Spray Projection



Type 1/4-KLC and Type 3/4-KLC
1/4" NPT male and 3/4" NPT male
pipe connections

The KLC FieldJet nozzle is typically used to spray areas not accessible with a boom sprayer. Its one piece nozzle design projects spray to both sides to form a wide swath flat spray. The round orifice minimizes clogging. Uniformity across the swath is not as good as with a properly operated boom sprayer. Available in brass or stainless steel.

Uniformity can be optimized by double overlapping spray swaths on successive sprayer passes. Remember, this also doubles the application volume.



How to order:
Specify part number and material.
Example: 1/4KLC-SS18 Stainless Steel

NOZZLE	PIPE CONNECTION	PSI	CAPACITY ONE NOZZLE IN GPM	"W" IN FEET	GPA				GALLONS PER 1000 SQ. FT.			
					3 MPH	4 MPH	5 MPH	8 MPH	3 MPH	4 MPH	5 MPH	8 MPH
1/4-KLC-5	1/4"	20	0.71	17	6.9	5.2	4.1	2.6	.16	.12	.09	.06
		30	0.87	18	8.0	6.0	4.8	3.0	.18	.14	.11	.07
		40	1.00	21	7.9	5.9	4.7	2.9	.18	.13	.11	.07
1/4-KLC-9	1/4"	20	1.27	18	11.6	8.7	7.0	4.4	.27	.20	.16	.10
		30	1.56	19	13.5	10.2	8.1	5.1	.31	.23	.19	.12
		40	1.80	21	14.1	10.6	8.5	5.3	.32	.24	.19	.12
1/4-KLC-18	1/4"	20	2.55	20	21	15.8	12.6	7.9	.48	.36	.29	.18
		30	3.12	21	25	18.4	14.7	9.2	.56	.42	.34	.21
		40	3.60	22	27	20	16.2	10.1	.62	.46	.37	.23
1/4-KLC-36	1/4"	20	5.09	22	38	29	23	14.3	.87	.66	.52	.33
		30	6.24	24	43	32	26	16.1	.98	.74	.59	.37
		40	7.20	26	46	34	27	17.1	1.0	.78	.63	.39
3/4-KLC-50	3/4"	20	7.07	23	51	38	30	19.0	1.2	.87	.70	.44
		30	8.66	26	55	41	33	21	1.3	.94	.75	.47
		40	10.0	28	59	44	35	22	1.3	1.0	.81	.51
3/4-KLC-72	3/4"	20	10.2	25	67	50	40	25	1.5	1.2	.92	.58
		30	12.5	29	71	53	43	27	1.6	1.2	.98	.61
		40	14.4	31	77	57	46	29	1.8	1.3	1.1	.66
3/4-KLC-108	3/4"	20	15.3	28	90	68	54	34	2.1	1.5	1.2	.77
		30	18.7	33	94	70	56	35	2.1	1.6	1.3	.80
		40	21.6	36	99	74	59	37	2.3	1.7	1.4	.85

Note: Always double check your application rates. See pages 153-157 for useful formulas and information.

MAINTENANCE

1. Keep water clean as possible not letting any dirt, rust, etc. into tank.
2. Check & clean strainer in the tank periodically.
3. Check & clean strainer tips in the boom periodically, especially before putting up for the season.
4. Grease bearings in wheels twice a year if used a lot.
5. Check air pressure in tires to make sure rim is not damaged.
6. Check calibration of tips.
7. Winterization – Run RV Anti-freeze through the system pump, booms, handgun, agitator.

Trouble Shooting

1. Motor will not run:
 - A. Check connections at the battery, pump, & toggle switch to make sure they are getting good connections & not corroded.
 - B. Check to see if the pressure switch is bad by unplugging the two red wires that are connected to the front of the pump. Then, take a jumper wire & hook the two wires together. If the pump runs then the pressure switch is bad.
 - C. If problem persists then you may need to replace the toggle switch or the pump itself.
2. Pump will not prime:
 - A. Check strainer inside tank to make sure it is not stopped up. (common problem)
 - B. Check fittings & housing to make sure they are tight & not cracked causing pump to suck air.
 - C. If A & B are ok then replace the valve assembly 94-390-05.

Any other problems or questions consult your dealer or call AG Spray Equipment, Inc.